

Term planning:

We continue to promote our envrioschools journey through our group learning.

This term our focus has been around our mara kai, and getting some support from our whanau with this.

Our emergent curriculum has also seen children engaging in group learning around their super powers, as well as the creation of play spaces such as a Four Square and a ballet studio!

These different focuses reflect our local curriculum as they emerge from children's interests, as well as community focusses.

As always the learning has been diverse as children have applied and developed a range of skills and knowledge. A visit to the Tokomairiro Four Square gave children a chance to get out and about and build connections in their learning and thanks Michael (owner) for the wee treat for the children

Term Dates:

Term 1:

20th January - 6th April

Term 2:

24th April – 30th June

Term 3:

17th July – 22nd September

Term 4:

9th October – 19th December



New learning is built on previous learning, as so, to introduce children to the concept of their wairua (special attributes), we are connecting this to ideas they already have (current working theories), this has included the concept of super powers, as well as strengths, what we

are good at and what we like doing. As you will know from your child's learning stories, at Milton kindergarten we provide a strength based approach to teaching and learning. Learning is driven by children's mana, mauri and wairua, as so this term we are developing children's ideas about their own wairua. Enhancing children's uniqueness ensures that they see themselves as competent and confident learners, secure in their sense of belonging and knowledge that they make a valid contribution to society.



Children's creation of the four square saw children expressing what they already know, alongside visiting the Four square children are working towards the learning outcome of Te Wahriki*

* Making connections between people, places and things in their world | te waihangā hononga

Children engaged in the arts, to make resources we didn't have such as money, as well as an additional till, as the play became popular, this saw children engaging in problem solving.

*Treating others fairly and including them in play | te ngākau makuru

*Using a range of strategies and skills to play and learn with others | te ngākau aroha

*Recognising mathematical symbols and concepts and using them with enjoyment, meaning and purpose | he kōrero pāngarau

This is just some of the outcomes children are demonstrating and developing through their play

A big welcome

We have several new children that we would like to welcome to Milton Kindergarten. We are



Maisy

Noella

Sarsha

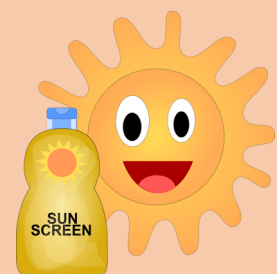
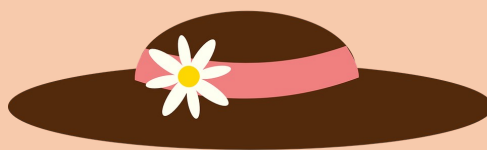
Dulya

Ollie

Oakley

Sunscreen

Reminder this term your tamariki need to come to kindergarten with sunscreen on and we reapply it again at 12pm. We also require sunhats to be worn every day while outside during these terms. If you have a spare sunhat at home, it would be great to name it and pop it in their bag. We find that they take more pride and care wearing a hat if it is one of their own. We do have a stash of kindy sunhats that can be used if this isn't possible.



Farewell

It is always a sad time when we farewell some of our friends. We wish you all the best on your new adventures at school.

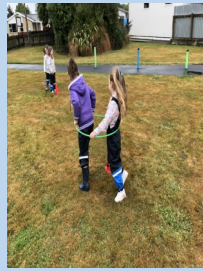


A big thank you to all the whanau, who attended the community meeting last term and for you valued feed in. We know not everyone could make it, but it was a great turn out, of all the kindergartens Milton had the best turn out of whanau so thank you again. This reflects the solid partnership between whanau and teachers. We also wanted to mention the overwhelming support for teachers across the community, most whanau expressing concerns for our well being with what ever direction we headed following this proposal. With the vote to merge with He Whānau Manaaki being unanimous across the kindergartens, this will be happening in early April.

We are glad to report that as we have spent more time with He Whānau Manaaki, we can see that they are an organisation that has clear values around supporting teachers, and they live by these. They believe as an organisation they are in service to teachers, to ensure we can make a difference for children. We look forward to becoming part of this larger organisation and the support this will provide our communities.

Sports Program

We are extremely excited that this year we will be continuing to offer Sports Program on a Thursday with Paul for the older children. Each week 8 children will be asked if they would like to go, please ensure your child has appropriate shoes with them. At the sports program they complete different challenges by themselves or as part of a team, where they will be encouraged to move in different ways and exploring a variety of equipment, such as catching, throwing, jumping and hurdles. One of our favourite activities at the moment is learning how to play the T-ball game!



Fundrasing

We are currently raising money for the outdoor environment. At the end of last year we had the Christmas raffle. We would like to say a massive thank you to Kylie Stevenson for organising the local businesses (see below) for their generous donations and for everyone for selling tickets. The raffles raised \$1,176.00 we now have a total of \$1831.00. When we have raised \$169.00 more we will be able to purchase the equipment. If you have any fundraising ideas for 2023 or would like to organise anything please speak to a member of the teaching team!

Thank you again to these local businesses for their contribution to the raffle prizes!

Case shop
Plains
Moto café
Still Shop
Must-hang
café
Forum café
Framing plus
Kelly's Kitchen

Scentsy -
Kylie Stevenson
Caltex
Midway Dairy
Union Street
Connetion
Night'n'Day
Tiffs
Hammer Hardware
Sumpter Moore
Rosie Posie
Milton Chemist
Black Lotus Hair
Studio
Clutha Vets

During the Summer holidays Rowena welcomed into the world Ihaia. He is absolutely gorgeous; Abraham is very proud of his little brother. Many of the children have already met him and love watching him sleep in the capsule.

While Rowena is away on maternity leave we are very lucky to welcome Donna into our Milton Kindergarten whanau.

Donna is an experienced teacher, with passions and strengths including strong links with the Pasifika community and passions in providing culturally responsive teaching and learning. Donna has a wealth of knowledge and experience that she brings with her, and we are delighted to tap into this while she is with us.



Donations

We would like to thank those whanau that have already paid their termly Donation of \$5 and a little reminder if you have not

Please use **MILTON** as the reference, when making the payment

South Otago/ WM kindergartens
06 0507 0854005 00

If you have any questions, please don't hesitate to speak to one of the teachers.

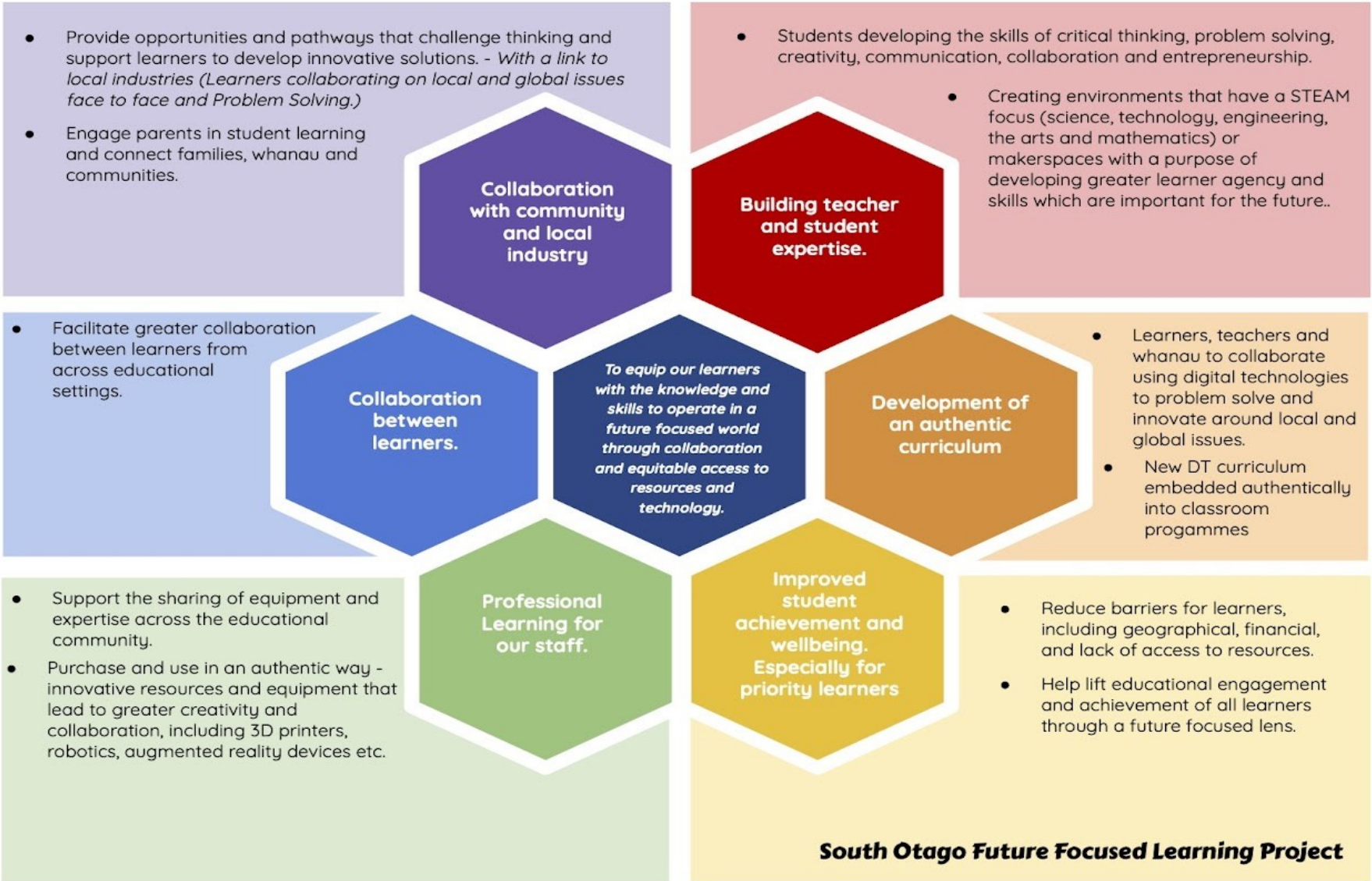
Future focussed project

Milton kindergarten are currently involved in the Future Focussed project which is bringing kindergarten, primary schools and high schools together ‘to increase the amount of future focused learning happening in classrooms. To ensure that children are collaborating, innovating, problem solving and connecting around real life projects and problems happening in their communities.’ This project is funded by the Clutha Community trust

For Milton kindergarten the focus has been on sustainability through which aligns this project with our envrioschools journey, this includes initiatives such as the introduction of a worm farm as well as sustainability for language and culture as we grow our ability to weave Mātauranga Māori into this journey and indeed into all that we do.

Milton kindergarten contributed work to the exhibition at Balclutha Library at the end of last year, this work is currently on display in the kindergarten, and will be displayed at Milton Library and the new hub in Balclutha over the next few months.

Supporting our youngest members of the community requires teachers to promote learning in ways that builds on their current interests and strengths. We work with a hands on age group and so children have been engaging in the vege garden and the worm farm to develop ideas about sustainability. Children have also developed their abilities to represent their ideas through their art work developing skills with technology and paper engineering. Children of kindergarten age are developing and refining their working theories about their world, learning in the early years provides the foundation for all later learning, so it makes sense to start the journey of suitability learning, now. The Future Focussed project provides more opportunities for us to work across our communities, as well as upskilling teacher’s ability to support this learning across the curriculum domains.



Children’s work on display at Balclutha library